

# INDIAN NOTICES TO MARINERS



EDITION NO. 18 DATED 16 SEP 2023

(CONTAINS NOTICES 153 TO 157)

REACH US 24 x 7



[msis-inho@navy.gov.in](mailto:msis-inho@navy.gov.in)  
[inho@navy.gov.in](mailto:inho@navy.gov.in)



+91-135-2748373



National Hydrographic Office  
107-A, Rajpur Road  
Dehradun – 248001  
INDIA



Commander (H)  
Maritime Safety Information Services  
+91- 135 - 2746290-117

WWW

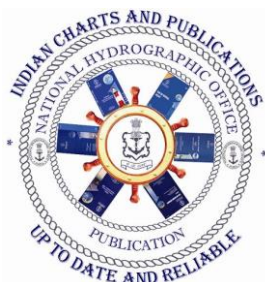
[www.hydrobharat.gov.in](http://www.hydrobharat.gov.in)

## CONTENTS

<u>Section No.</u>	<u>Title</u>
I	List of Charts Affected
II	Permanent Notices
III	Temporary and Preliminary Notices
IV	Marine Information
V	NAVAREA VIII Warnings in force
VI	Corrections to Sailing Directions
VII	Corrections to List of Lights
VIII	Corrections to List of Radio Signals
IX	Corrections to Miscellaneous Nautical Publications
X	Reporting of Navigational Dangers

(PUBLISHED ON NHO WEBSITE ON 1<sup>ST</sup> & 16<sup>TH</sup> OF EVERY MONTH)

**FEEDBACK:** [msis-inho@navy.gov.in](mailto:msis-inho@navy.gov.in)



INSIST ON INDIAN CHARTS AND  
PUBLICATIONS  
Original, Authentic and Up-to-Date



© Govt. of India Copyright

No permission is required to make copies of these Notices. However, such copies are not to be commercially sold.

## II

### MARINER'S OBLIGATION AND A CHART MAKER'S PLEA

Observing changes at sea proactively and reporting them promptly to the concerned charting agency, is an obligation that all mariners owe to the entire maritime community towards SOLAS. Mariners are requested to notify the Chief Hydrographer to the Government of India at the above mentioned address/fax number/ E mail address immediately on discovering new or suspected dangers to navigation, changes/ defects pertaining to navigational aids, and shortcomings in Indian charts/ publications. The Hydrographic Note [Form IH – 102] is a convenient form to notify such changes. Specimen form is attached at Section IX with this notice. Also visit our website for downloading and filling up instructions for Hydrographic Note.

**Chief Hydrographer  
to the Government of India**

#### **WARNING AGAINST USE OF COUNTERFEIT PRODUCTS**

**All mariners are cautioned against the use of counterfeit copies of IN Charts and publications. Navigational Charts produced after 31 Oct 14 carry NHO crest as watermark on the reverse with backslip. Chart Agent's stamp is mandatory on all Charts.**

**Counterfeit products may have errors resulting in potential risks. The same are not approved by inspecting agencies and do not satisfy the carriage requirements of SOLAS chapter V.**

**Mariners are strongly advised not to use or encourage the use of counterfeit charts and publications. Failure to comply with the warning may invite legal action.**

### III

## **EXPLANATORY NOTES**

**Corrections to Charts and Publications.** Section I comprises List of Charts affected by the notices contained in this edition. Whereas sections II and III contain information for correcting the charts and publications. Mariners should insist on corrected charts from their chart distributors/agents.

- (a) Geographical positions given are in the horizontal datum of the current edition of the chart, unless otherwise stated.
- (b) Bearings are true, reckoned clockwise from 000° to 359°. Bearings to lights are from seaward.
- (c) Symbols referred to, are those shown on the chart 5020 (INT 1).
- (d) Alterations to depth contours, deletion of depths to make way for new detail, etc; are not normally mentioned, unless they have some navigational significance.
- (e) Blocks and notes, if any, accompanying the Notices in Sections II and III are placed after Section IX.

**Temporary and Preliminary Notices.** These are indicated by (T) and (P) respectively after the Notice number and are placed in Section III. SI Nos. of those in force are published quarterly on 01 Jan, 01 Apr, 01 Jul and 01 Oct, and their text is published in Annual Edition of Indian Notices to Mariners. They should be inserted in pencil, by the user, on receipt.

**Source of Information.** A star preceding the number of a Notice indicates that the notice is promulgated by INHO based on original information received.

**Sailing Directions.** Corrections for the Sailing Directions (Pilots) are given in Section VI.

**Lights.** Corrections to Indian List of Lights are given in Section VII, where affected Light List number is quoted.

- (a) These corrections should be incorporated as per instructions given on page XI of the List of Lights.
- (b) Such correction notices to list of lights may be published in either an earlier or a later Edition of N to M than the Edition containing the Notice to the chart correction.
- (c) The range of a light given is its nominal range. Its geographical range is given in parenthesis only if it is less than the nominal range.
- (d) A star indicates that the corresponding field is to be amended and all stars indicate that new light is to be inserted.

**Radio Signals.** The corrections in Section VIII should be cut and pasted in the appropriate volume of the List of Radio Signals.

**Radio Navigational Warnings.**

- (a) These are broadcast as serially numbered NAVAREA warnings by the concerned NAVAREA coordinator through GMDSS and Area Radio Broadcasts.
- (b) They contain important information affecting navigational safety, which cannot await the publication of the next edition of N to M.
- (c) It should be borne in mind that they may be based on reports which cannot always be verified before promulgation.
- (d) It is therefore necessary to be selective, and promulgate only the more important warnings to avoid over loading users; the less important information is included in the forthcoming edition of N to M or the Chart/Publication concerned.

## IV

**Laws and Regulations.** While in the interest of the safety of shipping, the Hydrographic Office makes every endeavor to include in its publications details of the laws and regulations of all countries pertaining to navigation, it must be clearly understood: -

- (a) That no liability whatsoever can be accepted for failure to publish details of any particular law or regulation and
- (b) That publication of details of a law or regulation is solely for the safety and convenience of shipping and implies no recognition of the International validity of the law or regulation.

**Correction of Charts and Publications by the Users.** Notices to Mariners contain important information concerning safety of navigation at sea, hence, they should be used to keep the specified charts and publications up-to-date.

**Reliance on Charts and Associated Publications.** While every effort is made by the Hydrographic Office to ensure the accuracy of the information on Charts and Publications before they are published, it should be appreciated that it may not always be complete and up-to-date. The mariner must be the final judge for the reliance he can place on the information available, bearing in mind his particular circumstances, local pilotage guidance and judicious use of available navigational aids.

**Use of Global Positioning System (WGS 84) positions.**

- (a) The positions of hydrographic objects shown on some of the Indian charts and publications are in Everest datum. However, the positions of vessels obtained from Global Positioning System (GPS) are on World Geodetic System 1984 datum. There will always exist difference in the position values obtained by visual fixing (Everest Datum) and GPS position (WGS 84 datum).
- (b) Wherever these differences have been ascertained, their average values are published as a Cautionary Note on the chart concerned, as shifts in Latitude and Longitude. Whilst plotting GPS positions on charts, the shift values as given on the chart must be applied, before making any assessment of the navigational situation vis-à-vis the other charted information.
- (c) These datum shift values are not uniform, particularly in areas off Andaman and Nicobar and Lakshadweep Islands, as these places are not linked to mainland network (Everest datum). Mariners are advised to use alternate source of position information such as Visual or Radar, particularly when closing the shore or navigating in the vicinity of dangers.

**Source Data on Charts.** All Indian charts contain specific information on their source of hydrographic data. In areas where the source data is very old, incomplete and less reliable, the mariner must use such charts with prudence. Mariner should always use the largest scale charts available for the area. Apart from being the most detailed, the larger scale charts are usually corrected first. Hydrographic information may be sparse on small scale charts. On such charts, a charted shoal may be in error as regards position, least depth and extent. Uncharted dangers may also exist, particularly in areas away from well-established routes. Mariners must exercise due caution.

**Further Guidance.** The Mariner's Hand Book (NP 100) gives full explanation on the use of charts and the type of information contained on charts. In their own interest, all users of charts should refer to it.

## **NEWLY PUBLISHED INDIAN CHARTS, ENC<sub>s</sub> AND PUBLICATION**

1. The new Indian Charts that are available for mariners in the market are as follows:-

<i>Chart No.</i>	<i>Date of Publication</i>	<i>Title, Limits &amp; Description</i>	<i>Scale</i>	<i>Folio</i>	<i>Price</i>
Nil					

2. The new edition Indian Charts that are available for mariners in the market are as follows:-

<i>Chart No.</i>	<i>Date of Publication</i>	<i>Title, Limits &amp; Description</i>	<i>Scale</i>	<i>Folio</i>	<i>Price</i>
Nil					

3. The Indian Charts that are permanently withdrawn are as follows:-

<i>Chart No.</i>	<i>Date of Publication</i>	<i>Title</i>	<i>On Publication of New Chart/ Edition</i>	<i>Date of Publication</i>
Nil				

4. The new Indian Electronic Navigational Charts that are available for mariners in the market are as follows:-

<i>ENC Cell Name</i>	<i>Chart No.</i>	<i>Title</i>	<i>Issue Date</i>
Nil			

5. The new edition Indian Electronic Navigational Charts that are available for mariners in the market are as follows:-

<i>ENC Cell Name</i>	<i>Chart No.</i>	<i>Title</i>	<i>Issue Date</i>
Nil			

6. The Indian Electronic Navigational Charts that are permanently withdrawn are as follows:-

<i>ENC Cell Name</i>	<i>Chart No.</i>	<i>Title</i>	<i>Issue Date</i>
Nil			

7. The forthcoming Indian Charts are as follows:-

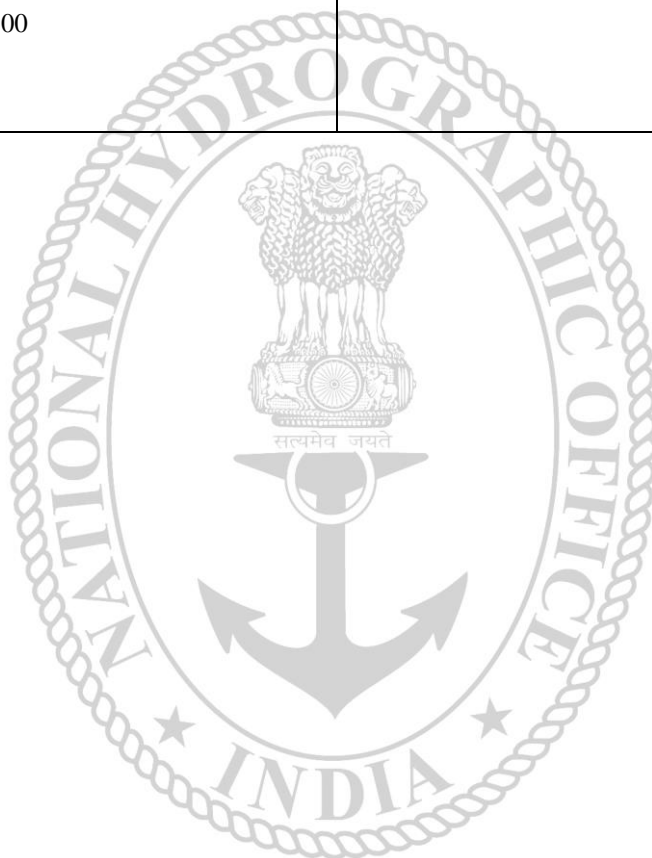
<i>Chart No</i>	<i>Title</i>	<i>Scale</i>	<i>Remarks</i>
2527 (INT 77397)	MAURITIUS	1,25,000	NEW EDITION
2529 (INT 7601)	NORTHERN ISLETS OF MAURITIUS	50,000	NEW CHART
2530 (INT 7602)	APPROACHES TO GRAND PORT	30,000	NEW CHART
2531 (INT 7603)	RODRIGUES ISLAND	50,000	NEW CHART
317	PALK BAY WESTERN PORTION	1,50,000	NEW EDITION
4164	TERASSA ISLAND	25,000	NEW CHART

## VI

### Availability of ENC's

The complete folios of Official Indian ENC's are distributed worldwide through JEPPESEN MARINE (formerly C-MAP), UKHO and Norwegian Hydrographic Service. UKHO distributes Indian ENC's through the worldwide network of their agents and distributors. Updates are also made available as per the existing policy of the distributor. Mariners and other ENC users may contact the under mentioned for further details:

<b>United Kingdom Hydrographic Office</b> Admiralty Way, Taunton, Somerset TA1 2DN, UK Tel : +44 (0) 1823 337900 Fax : +44 (0) 1823 330561, 1823 284077 Web site : <a href="http://www.hydro.gov.uk">www.hydro.gov.uk</a>	<b>M/s IIC Technologies Limited</b> B-2-350/5/B-22, Road No. 3 Banjara Hills, Hyderabad - 500 034 Telangana Tel: +91 4039144444 Fax: +91 4039144455 Email: <a href="mailto:somnath.marthi@iictechnologies.com">somnath.marthi@iictechnologies.com</a> Web: <a href="http://www.iictechnologies.com">www.iictechnologies.com</a>
<b>M/s Primar</b> Norwegian Hydrographic Service, Postbox 60, 4001 Stavanger Norway Telephone - +47 - 51 85 87 00 Fax - + 47 - 51 85 87 08 E-mail: <a href="mailto:data@ecc.no">data@ecc.no</a> Website: - <a href="http://www.primar.org">www.primar.org</a>	



**SECTION – I**

The list of charts affected by the Notices 153 to 157 contained in this edition is as follows:-

<b>CHART NUMBER</b>	<b>FOLIO NO.</b>	<b>NOTICE NO.</b>
21	2	155 (T), 157 (T)
22 (INT 752)	3	153, 155 (T)
31 (INT 756)	5	156 (T), 157 (T)
32 (INT 754)	5	156 (T), 157 (T)
33 (INT 755)	5	157 (T)
202	2	155 (T)
207	2	155 (T)
209	3	155 (T)
210	3	155 (T)
211	3	155 (T)
219	4	153
224	5	154
251 (INT 7318)	2	155 (T)
253 (INT 7328)	2	155 (T)
254 (INT 7331)	3	155 (T)
255 (INT 7334)	3	155 (T)
256 (INT 7340)	3	155 (T)
258 (INT 7348)	4	153
271	2	155 (T)
272	4	153
291	2	155 (T), 157 (T)
292 (INT 7021)	2	155 (T)
293 (INT 7022)	3	155 (T)
294 (INT 7023)	4	153
315	5	157 (T)
316	5	157 (T)
352 (INT 7416)	5	156 (T)
353 (INT 7413)	5	156 (T)
354 (INT 7408)	5	156 (T)
355 (INT 7405)	5	156 (T)
358 (INT 7394)	5	157 (T)
391	5	156 (T)
2101 (INT 7347)	3	155 (T)
7070 (INT 70)	1	157 (T)
7071 (INT 71)	1	156 (T), 157 (T)
7072 (INT 72)	1	157 (T)
7073 (INT 73)	1	156 (T), 157 (T)
7508 (INT 508)	1	157 (T)
7702 (INT 702)	1	157 (T)
7703 (INT 703)	1	157 (T)
7705 (INT 705)	1	155 (T), 157 (T)
7706 (INT 706)	1	155 (T), 156 (T), 157 (T)
7707 (INT 707)	1	157 (T)
7708 (INT 708)	1	157 (T)

**SECTION – II****PERMANENT NOTICES**

**\*153 (18/23) INDIA – WEST COAST – Tellicherry to Tanur Nagaram – Wreck.**

Source: MRSC Beypore.

**Chart 22 (INT 752)** [previous update 140/23]

Insert  PA 11° 36′.50N., 075° 22′.00E.

**Chart 294 (INT 7023)** [previous update 140/23]

Insert  PA 11° 36′.50N., 075° 22′.00E.

**Chart 272** [previous update 140/23]

Insert  PA 11° 36′.50N., 075° 22′.00E.

**Chart 258 (INT 7348)** [previous update 140/23]

Insert  PA 11° 36′.50N., 075° 22′.00E.

**Chart 219** [previous update 133/22]

Insert  PA 11° 36′.50N., 075° 22′.00E.

**\*154 (18/23) INDIA – SOUTH EAST COAST GULF OF MANNAR – Manappad to Setukkarai – Maritime Boundary and Legend.**

Source: NHO, Dehradun.

**Chart 224** [previous update 211/21]

Insert – + – + – + – + – + – + 08° 01′.61N., 078° 51′.41E.  
 08° 12′.20N., 078° 53′.70E.  
 08° 19′.82N., 078° 54′.99E.  
 legend, “INDIA” centered on; 08° 09′.05N., 078° 52′.43E.  
 legend, “SRI LANKA” centered on; 08° 08′.83N., 078° 53′.38E



**Section – III****TEMPORARY AND PRELIMINARY NOTICES**

1. It is brought to the information to the users that same or all information contained in this Temporary Notices to mariner may have been included in the relevant ENC's.
2. New TPNMs are now part of ENC updates from 01 Oct 22 onwards.
3. All in force Temporary and Preliminary Notices are available for visualisation along with details of affected Charts and ENCs for mariners on **INDIAN WARNINGS INFORMATION AND NAVIGATION SERVICES (INDIA – WINS)** on [www.hydrobharat.gov.in](http://www.hydrobharat.gov.in).

<b>*155 (T) (18/23)</b>	<b>INDIA – WEST COAST – Arabian Sea – Oil Rigs.</b>
Source: NCD, Mumbai.	
1. List of Oil Rigs is as follows: -	
<b>Rig Name</b>	<b>Position</b>
Aban II	19° 22'.42N., 072° 13'.50E.
Aban III	19° 34'.71N., 071° 23'.15E.
Aban IV	18° 17'.31N., 072° 20'.91E.
Aban VIII	18° 33'.63N., 072° 14'.94E.
Admarine 9	19° 19'.46N., 071° 14'.10E.
CE Thornton	19° 25'.36N., 071° 19'.56E.
Compact Driller	19° 18'.56N., 071° 26'.23E.
Discovery 1	18° 38'.20N., 071° 00'.92E.
FG MC Clintok	19° 00'.63N., 072° 11'.95E.
Foresight Driller IX	18° 37'.93N., 072° 14'.22E.
Great Drill Chaaru	18° 43'.05N., 072° 19'.13E.
Great Drill Chetna	18° 09'.23N., 072° 20'.16E.
Great Drill Chaaya	18° 32'.07N., 072° 13'.98E.
Great Drill Chitra	19° 12'.51N., 072° 02'.24E.
Jindal Star	19° 31'.84N., 071° 24'.92E.
Jindal Supreme	19° 32'.89N., 071° 45'.60E.
JT Angel	18° 31'.16N., 072° 14'.47E.
Jindal Explorer	18° 35'.99N., 071° 00'.22E.
Key Singapore	22° 32'.53N., 068° 37'.61E.
Parameswara	19° 30'.97N., 071° 21'.32E.
Ron Tappmeyer	19° 36'.50N., 071° 18'.85E.
Sagar Vijay	18° 42'.58N., 070° 58'.27E.
Sagar Jyoti	18° 58'.58N., 071° 17'.50E.
Sagar Kiran	19° 23'.11N., 071° 53'.84E.
Sagar Ratna	19° 14'.92N., 072° 11'.00E.
Sagar Uday	19° 10'.06N., 072° 11'.23E.
Sagar Samrat	18° 58'.43N., 071° 37'.44E.
Sagar Gaurav	19° 45'.44N., 071° 11'.23E.
Trident 2	19° 44'.26N., 071° 34'.24E.
Trident 12	18° 36'.15N., 071° 01'.63E.
Vivekananda 1	19° 39'.54N., 071° 44'.40E.
Vivekananda 2	19° 14'.62N., 070° 53'.04E.
Virtue 1	19° 00'.48N., 072° 09'.07E.
Victory Driller	19° 20'.91N., 071° 24'.51E.
<b>Armada Sterling I</b>	<b>18° 35'.24N., 071° 02'.08E.</b>
<b>Armada Sterling II</b>	<b>19° 10'.50N., 070° 56'.70E.</b>

2. <b>All Highlighted Oil Rigs reflects changes in position of respective Oil Rigs from previous Notice.</b>
3. All vessels operating in vicinity are to maintain a clearance of 01 NM off the oil rigs.
4. All positions referred to WGS 84 datum
<b>Charts Affected – 21 – 22 (INT 752) – 291– 292 (INT 7021) – 293 (INT 7022) – 251 (INT 7318) – 253 (INT 7328) – 254 (INT 7331) – 255 (INT 7334) – 256 (INT 7340) – 271 – 202 – 207 – 209 – 210 – 211 – 2101 (INT 7347) – 7705 (INT 705) – 7706 (INT 706).</b>
<b>Former INTM 141 (T)/23 is cancelled.</b>

<b>*156 (T) (18/23)</b>	<b>INDIA – EAST COAST – Bay of Bengal – Oil Rigs.</b>
Source: NCD, Mumbai.	
1. List of Oil Rigs is as follows: -	
<b>Rig Name</b>	<b>Position</b>
DDKG 1	16° 32'·27N., 082° 33'·72E.
<b>Platinum Explorer</b>	<b>16° 06'·95N., 082° 19'·70E.</b>
<b>Olinda Star</b>	<b>19° 33'·35N., 086° 13'·90E.</b>
<b>West Polaris</b>	<b>19° 28'·44N., 086° 18'·66E.</b>
<b>Armada Sterling V</b>	<b>16° 22'·22N., 082° 19'·30E.</b>
2. <b>All Highlighted Oil Rigs reflects changes in position of respective Oil Rigs from previous Notice.</b>	
3. All vessels operating in vicinity are to maintain a clearance of 01 NM off the oil rigs.	
4. All positions referred to WGS 84 datum.	
<b>Charts Affected – 31 (INT 756) – 32 (INT 754) – 391– 352 (INT 7416) – 353 (INT 7413) – 354 (INT 7408) – 355 (INT 7405) – 7071 (INT 71) – 7073 (INT 73) – 7706 (INT 706).</b>	
<b>Former INTM 149 (T)/23 is cancelled.</b>	

**\*157 (T) (18/23) INDIAN OCEAN - NORTHERN PART - RAMA Buoys.**

Source: NOAA.

1. The research moored array of African - Asian - Australian Monsoon analysis and prediction (RAMA) buoys laid in following positions:-

<b>Buoy No./Name</b>	<b>Position</b>
RA185A	15° 01'.70N., 089° 02'.50E
RA184A	00° 00'.00N., 089° 57'.60E
<b>RA176A</b>	<b>00° 59'.00S., 100° 22'.00E</b>
RA175A	01° 32'.90S., 080° 34'.00E
RA183A	09° 24'.40N., 097° 50'.30E
<b>RA182A</b>	<b>04° 13'.40N., 066° 41'.70E</b>
RA181A	08° 07'.70S., 110° 32'.90E
<b>RA180A</b>	<b>00° 39'.80S., 073° 07'.30E</b>
<b>RA179A</b>	<b>01° 36'.60S., 066° 49'.50E</b>
<b>RA177A</b>	<b>03° 23'.00N., 057° 52'.90E</b>
RA178A	09° 24'.80S., 051° 07'.00E
RT033	09° 46'.60N., 080° 16'.60E
RT030	00° 47'.80S., 083° 06'.70E
RT029	12° 34'.90S., 068° 50'.60E
RT028	11° 50'.50S., 080° 18'.80E
RT032	25° 06'.80N., 062° 20'.00E
<b>RT040</b>	<b>03° 55'.30S., 064° 58'.50E</b>
<b>RT039</b>	<b>08° 05'.90S., 065° 04'.40E</b>
<b>RT038</b>	<b>12° 01'.30S., 064° 57'.80E</b>

2. **All Highlighted Buoys reflects changes in position of respective buoys from previous Notice.**

3. All vessels operating in vicinity are to maintain a clearance of 01 NM off the moored buoys.

4. All positions are in WGS 84 datum.

**Charts Affected - 21 - 31 (INT 756) - 32 (INT 754) - 33 (INT 755) - 291 - 315 - 316- 358 (INT 7394) - 7070 (INT 70) - 7071 (INT 71) - 7072 (INT 72) - 7073 (INT 73) - 7508 (INT 508) - 7702 (INT 702) - 7703 (INT 703) - 7705 (INT 705) - 7706 (INT 706) - 7707 (INT 707) - 7708 (INT 708).**

**Former INTM 150 (T)/23 is cancelled.**

## **SECTION – IV**

### **MARINE INFORMATION**

#### **1. NAVTEX TRANSMISSION**

Status of MSI Promulgation by NAVTEX Stations is as follows:-

Mauritius (Cassis)	- Operational
Seychelles (Mahe)	- Operational
Myanmar (Yangon, Myeik, Kyau Phyu)	- Operational

Following new NAVTEX stations along the Indian coast have commenced operations:-

<b>INTERNATIONAL NATIONAL NAVTEX FREQUENCY - 518 kHz</b>								
<b>Sl.</b>	<b>Station Name</b>	<b>B1</b>	<b>Broad Cast Timings in UTC</b>					
(a)	Veraval	H	0110	0510	0910	1310	1710	2110
(b)	Vengurla Point	J	0130	0530	0930	1330	1730	2130
(c)	Muttam Point	L	0150	0550	0950	1350	1750	2150
(d)	Porto Novo	O	0220	0620	1020	1420	1820	2220
(e)	Vakalpudi	Q	0240	0640	1040	1440	1840	2240
(f)	Balasore	S	0300	0700	1100	1500	1900	2300
(g)	Keating Point	V	0330	0730	1130	1530	1930	2330

#### **2. MISIDENTIFYING FISHING BOATS AS PIRATE SKIFFS**

All merchant vessels entering Indian EEZ are advised that dense fishing activity may be encountered off West Coast of India. Fishing is generally carried out by mechanized boats and single hull boats with outboard motors carrying 4-5 crews using long lines upto 50 NM from coast. The vessels traversing the nets are likely to be approached by fishing boats for safeguarding nets and lines and should not be mistaken as skiffs and PAG's. Masters of vessels to report any suspicious activity of fishing vessels immediately to MRCC (Mumbai) on telephone +91-22-24388065, 24316558, Email: - mrcc-west@indiancoastguard.nic.in. Any suspicious activity of skiffs/ boats to be photographed if possible. Merchant vessels with armed guards on board are to report presence of guards to Indian Navy/Coast Guard while transiting Indian EEZ.

#### **3. DISPLAY ANOMALIES IN ECDIS**

(a) Mariners are advised that the International Hydrographic Organization (IHO) check data set shows that some ECDIS systems fail to display some significant underwater features in the standard display mode. The use of this check data set, issued through ENC service providers and available from the IHO website [www.iho.int](http://www.iho.int), to check the operation of ECDIS is strongly recommended. JRC has confirmed that certain versions of JRC ECDIS fail to display some types of wreck and obstructions, including stranded wrecks, in any display mode. Where JRC ECDIS is in use, paper charts should be the primary means of navigation until the ECDIS has been proved to operate correctly. See [www.jrc.co.jp/eng/product/marine/whatsnew/20120313/index.html](http://www.jrc.co.jp/eng/product/marine/whatsnew/20120313/index.html) for further information.

(b) Some Electronic Chart Display and Information Systems (ECDIS) may exhibit operating anomalies. The International Maritime Organization's (IMO) circular SN.1/CIRC.312 pages /imodocs.aspx (registration required) lists identified anomalies, Their characteristics and remedial advice. Mariners are reminded that they should access the International Hydrographic Organization (IHO) data presentation and performance check (DPPC) dataset (news links of <http://www.iho.int/srv1>) and ensure that all installed ECDIS units are checked.

#### 4. **SAFETY FAIRWAYS, RECOMMENDED ROUTES, TRAFFIC SEPARATION SCHEME**

The Director General Shipping has established Safety fairways, recommended routes and traffic separation scheme (TSS) in restricted Indian waters including the offshore development area to enhance safety of navigation. The details of coordinates are published in the fortnightly Indian Notices to Mariners.

(a) **Safety Fairways:** An area within which permits are not granted for the erection of oil or gas related structures. The use of a safety fairway is not usually mandatory, but is recommended. Safety fairways have been promulgated in and round offshore development area in Arabian Sea up to the Exclusive Economic Zone (EEZ) due to increased weather related marine accidents and dense traffic. These are mandatory for all Indian ships and vessels transiting through the ODA and recommendatory for all foreign flag ships and vessels irrespective of size.

(b) **Traffic Separation Schemes (TSS):** The TSS is mandatory for all Indian and foreign flag ships and vessels entering and leaving.

#### 5. **GAGAN SYSTEM COMMISSIONED FOR OPERATIONS**

The GAGAN System is now commissioned for safety of life, civil aviation, and en- route operations in addition to all other non-aviation applications. The GAGAN signal is being broadcasted through GSAT-8 and GSAT-10 with PRN127& 128 respectively. All the GPS users are requested to enable SBAS functionality in their receivers, configure it to receive PRN- 127& 128 and avail the benefits of GAGAN in terms of increased accuracy and reliability. There may be occasional signal outages due to system up-gradation activities.

#### 6. **USAGE OF THURAYA/ IRIDIUM AND SATELLITE PHONE**

(a) The use of Thuraya, Iridium and other such satellite phone is banned in India under Sec 6 of Indian Wireless Act and Sec 20 of Indian Telegraph Act. It is intimated to all shipping companies/ shipping agents that use of Thuraya/ Iridium and other such satellite phones are banned in Indian waters and seafarers should not use the same.

(b) Satellite phones can be used only after no objections certificate issued by department of telecommunication (DOT) on a case to case basis. The shipping agents should mandatorily intimate the details of person carrying Thuraya and the particulars of Thuraya, Iridium and other such sets in Pre Arrival Notification on Security (PANS).

(c) The unauthorized holders of Thuraya/ Iridium and other such Satellite phones can be prosecuted under Sec 6 of Indian Wireless Act and Sec 20 of Indian Telegraph Act.

#### 7. **CAUTIONARY NOTE**

There is a finite amount of lag between publication of large and small scale Indian Nautical Charts. To avoid uncertainty the mariners are advised to use large scale charts for coastal navigation wherever applicable and available. In addition, mariners are to refer large scale charts in conjunction with small scale charts in areas where both overlap during both planning and conduct of passage.

#### 8. **ADVISORY FOR ALL VESSELS NAVIGATING INDIAN WATERS**

(a) All vessels navigating in Indian waters are cautioned to keep a sharp look-out for fishing vessels and small crafts, as there have been several incidents of collisions with such vessels in the past resulting in loss of innocent lives as well as damage to property.

(b) It is further cautioned that all vessels need to exercise extreme care while navigating during hours of darkness as such vessels are generally of primitive built (wood/fibre/etc) due to which it may not be detected on ship's radar, especially during adverse weather conditions. Also, such vessels may not be properly lit, or sometimes, only one vessel may be lit among multiple vessels in a cluster.

(c) The general areas of concern on the west coast of India are the areas of convergence and divergence of traffic, mainly between Mangalore to Kanyakumari (Cape Comorin). Further, in these areas, additional caution needs to be exercised and wide berth be given to all such vessels.

- (d) All fishing vessels are also cautioned to avoid fishing in areas having high density traffic. All fishing vessels are also required to always maintain proper lookout by sight, hearing and by all available means and comply with all applicable provisions of Collision Regulations.

### **List of Indian Chart Agents**

<b>OSA Books and Periodicals</b> R-246, Greater Kailash –I, New Delhi - 110 048 Tel/Fax: +91-11-26418643, 46557337, Mob: 9971093992 Email: <a href="mailto:rpani246@gmail.com">rpani246@gmail.com</a>	<b>M/s VDO Marine Instruments</b> Shanghar Building, PO Bag No – 645, 45/271, Corner of Bristow & Naval Road, Willingdon Island, Kochi – 682 003 Tel: +91 484 2667157 Fax: +91 484 2667121 Email: <a href="mailto:atmain@md4.vsnl.net.in">atmain@md4.vsnl.net.in</a>
<b>M/s Global Charts &amp; Nav. Aids Pvt. Limited</b> 1A, Goa Mansion, Ground Floor, 58, Dr. SunderlalBahl Path (Goa Street), Fort, Mumbai - 400 001 Tel: 91-22-22626318, 22626380 Fax: 91-22-22621488 Email: <a href="mailto:sales@globalcharts.in">sales@globalcharts.in</a> Web: <a href="http://www.globalcharts.com.sg">www.globalcharts.com.sg</a>	<b>SMS Marine Private Ltd</b> 505, Raheja Arcade, Sector 11, CBD Belapur, Navi Mumbai – 400 614 Tel: +91-22-62233326, Fax: 022-67939504 Mobile: +91 9820 238 542 Email: <a href="mailto:info@c-map.co.in">info@c-map.co.in</a> , <a href="mailto:raj.chakravorty@smsmap.com">raj.chakravorty@smsmap.com</a> Web: <a href="http://www.smsmaps.co.in">www.smsmaps.co.in</a>
<b>M/s C &amp; C Marine Combine</b> 25 Bank Street, 1 <sup>st</sup> Floor, Fort Mumbai - 400 023 Tel: 91-22- 22660017/0018/0525/1937 Ext: 32 Tel: 91-22-22672143 Fax: 91-22-22670896 Email: <a href="mailto:vijay@ccmarine.in">vijay@ccmarine.in</a> , <a href="mailto:sales@ccmarine.in">sales@ccmarine.in</a>	<b>M/s Global Marine Infratech Pvt. Ltd.</b> SikshaSandan, Ground Floor, Plot No. ND7, VIP Area, IRC Village, Bhubaneswar – 751015 Tel: +91-674-2550599, Fax: +91-674-2551899 Cell:- +91-9337477799, 7077702499 Email: <a href="mailto:tusarkantha@gmiindia.in">tusarkantha@gmiindia.in</a> Web: <a href="http://www.gmiindia.in">www.gmiindia.in</a>
<b>M/s JM Maritime Services</b> 24/24C Kavarana Building, Ground Floor, WadiBunder, P.D. Mellow Road, Mumbai – 400 009 Tel: +91 22 23736956, Fax: 022 - 23725083 Cell: +91 9820788357 Email : <a href="mailto:jmms@mtnl.net.in">jmms@mtnl.net.in</a> , <a href="mailto:charts@mtnl.net.in">charts@mtnl.net.in</a>	<b>L. R. Marine Services</b> 301, 3rd Floor, Biryas House, 265, PerinNariman Street, Fort, Mumbai - 400 001. Tel: +91-22-2269 1535, Fax: +91-22-66359148 Cell No: +91 8108926880/ +91 98214 60258 Email: <a href="mailto:lrcharts@gmail.com">lrcharts@gmail.com</a> , <a href="mailto:lrmarine@live.com">lrmarine@live.com</a>
<b>M/s Lift o Marine</b> Allen's Mansion, C6, Nungi Station Road, Bata Nagar, Kolkata – 700 140 Tel: +91 9836972027 Fax: 033 24924283 Email: <a href="mailto:sankar@liftmarine.org">sankar@liftmarine.org</a> , <a href="mailto:liftmarine77@gmail.com">liftmarine77@gmail.com</a> Web: <a href="http://www.liftmarine.org">www.liftmarine.org</a>	<b>IIC Technologies Limited</b> 8-2-350/5/B-22, Road No. 3, Banjara Hills, Hyderabad – 500 034, Telangana Tel: +91 40 39144444 Fax: +91 40 39144455 Email: <a href="mailto:somnath.marthi@iictechnologies.com">somnath.marthi@iictechnologies.com</a> Web: <a href="http://www.iictechnologies.com">www.iictechnologies.com</a>
<b>M/s Zenith Surveys (I) Pvt. Ltd.</b> Lakhani'sPlam View, First Floor, Office No. 889, Sector 48, Nerul, Navi Mumbai – 400 706 Tel/ Fax: +91-22- 27708011 Email: <a href="mailto:zenithsurveys703@gmail.com">zenithsurveys703@gmail.com</a> <a href="mailto:nyvmane@yahoo.com">nyvmane@yahoo.com</a> Web: <a href="http://www.zenithsurvey.com">www.zenithsurvey.com</a>	<b>M/s CNC</b> Office No. S-12-92, Haware's Centurion Premises Coop. Soc. Ltd Plot no 88-91, Sector 19, NERUL, Navi Mumbai – 400706 Tel: +91 22 22660017/ +91 22 49747575 Cell No: +91 9920654848/ +91 7506097212 Email: <a href="mailto:sales@emariner.net">sales@emariner.net</a>



## SECTION – V

### NAVAREA – VIII WARNINGS IN FORCE.

1. All in force NAVAREA and NAVTEX messages are available for visualisation along with details of affected Charts and ENC's for mariners on **INDIAN WARNINGS INFORMATION AND NAVIGATION SERVICES (INDIA – WINS)** on [www.hydrobharat.gov.in](http://www.hydrobharat.gov.in).
2. For details of NAVAREA limits and organisation/ coordination, please refer to Notice No. 12 of the Special edition of Indian Notice to Mariners – 2020.
3. NAVAREA VIII Warnings in force as on 16 Sep 23: -

<b>2022 SERIES</b> - 49 118 134 162 237 253 259 286 445 461 476 497 519 646 757 997
<b>2023 SERIES</b> - 116 161 178 179 240 280 307 386 455 456 484 574 593 604 622 655 674 675
676 696 703 712 725 727 733 741 742 748 750 756 758 759 761 775 776 781 785 787 788 789
791 793 794 795 796

4. NAVAREA VIII Warnings issued during the period from 01 Sep 23 to 15 Sep 23 (both dates inclusive) are as tabulated below: -

<b>764. Bay of Bengal - off Chittagong.</b> Charts IN 31 BA 90 INT 756. Firing scheduled 04 to 08 Sep 23 from 0100 to 1700 UTC in danger sector extending upto 6.8 Nm between azimuth 330 from 22-23.50N 091-45.71E and azimuth 280 from 22-20.75N 091-45.71E. Wide berth from area advised. 2. Cancel this MSG 081800 UTC Sep 23.
<b>765. Cancel NAVAREA VIII MSG 313/22, 601/22, 617/22, 757/23 and this MSG. INTM 17/23, 151(T) refers.</b>
<b>766. NAVAREA VIII - Warnings in force as on 01 Sep 2023</b> <b>2022 Series</b> - 049 118 134 162 237 253 259 286 445 461 476 497 519 646 757 856 997 <b>2023 Series</b> - 064 116 161 178 179 240 280 307 386 455 456 484 574 593 604 622 655 674 675 676 695 696 703 712 725 727 733 738 741 742 747 748 750 755 756 758 759 760 761 762 763 764 765 (A) NAVAREA VIII Warnings less than 42 days promulgated via safetynet. (B) Text of NAVAREA VIII Warnings in force including those which no longer broadcast available in <a href="http://www.hydrobharat.gov.in">www.hydrobharat.gov.in</a> 2. Cancel this MSG 081000 UTC Sep 23.
<b>767. India East Coast - off Balasore.</b> Charts IN 31 301 351 3011 INT 7419. Experimental flight trials scheduled 05 to 12 Sep 23 from 0330 to 1130 UTC in danger area bounded by (a) 20-57N 086-54E (b) 21-13N 087-23E (c) 21-31N 087-42E (d) 21-41N 087-45E. Danger area extending up to coastline joining point A and D. Wide berth from area advised. 2. Cancel this MSG 121230 UTC Sep 23.
<b>768. India West Coast - off Karwar.</b> Charts IN 22 257 294 7706 INT 7343 . Subsurface firing scheduled 05, 06 Sep 23 from 1430 to 1829 UTC in danger area bounded by 14-22.43N 073-18.13E, 14-36.87N 073-13.98E, 14-34.74N 073-03.78E, 14-20.67N 073-07.80E. Wide berth from area advised 2. Cancel this MSG 061929 UTC Sep 23.
<b>769. Andaman Sea - off Barren I.</b> Charts IN 41 473 7706 INT 7031. Firing by CG aircraft scheduled from 050830 to 051030 UTC Sep 23 in danger area bounded within 11-50N to 12-00N and 093-40E TO 094-10E. Wide berth from area advised. 2. Cancel this MSG 051130 UTC Sep 23.
<b>770. India West Coast - off Mumbai.</b> Charts IN 21 211 255 7706 INT 7334. Acoms 11 will carry out pipeline survey in area bounded within 18-36.97N to 18-41.63N and 072-09.34E to 072-23.93E from 04 to 08 Sep 23. Wide berth requested. 2. Cancel this MSG 081830 UTC Sep 23.
<b>771. India West Coast - off Porbandar.</b> Charts IN 21 252 292 INT 7021. Firing by CG aircraft scheduled from 060630 to 060630 UTC Sep 23 in danger area bounded by 21-32N 069-24N 21-17E 069-24N 21-17E 069-06E 21-32N 068-56E. Wide berth from area advised. 2. Cancel this MSG 060730 UTC Sep 23.
<b>772. Bay of Bengal.</b> Charts IN 31 41 BA 830 INT 757. Rocket debris predicted from 061700 to 062300 UTC Sep 23 in area bounded by 17-08N 093-07E, 17-01N 093-40E, 16-08N 093-28E, 16-15N 092-55E. Wide berth from area advised. 2. Cancel this MSG 070001 UTC Sep 23.

<p><b>773. India West Coast - off Kochi.</b> Charts IN 22 220 259 INT 7356. Firing scheduled 07 and 08 Sep 23 from 0430 to 1130 UTC in danger area bounded within 10-08N to 10-18N and 075-30E to 075-40E. Wide berth from area advised.</p> <p>2. Cancel this MSG 081230 UTC Sep 23.</p>
<p><b>774. Southern Indian Ocean.</b> Charts IN 7070 7073 INT 73. Space debris predicted from 08 to 15 Sep 23 between 2258 UTC and 0616 UTC in area bounded by 08-52S 092-27E, 07-45S 089-27E, 30-12S 061-09E, 40-45S 002-20W, 42-56S 002-23W, 32-15S 063-10E. Wide berth from area advised.</p> <p>2. Cancel this MSG 150716 UTC Sep 23.</p>
<p><b>775. India West Coast - Gulf of Kachchh.</b> Charts IN 203 2068 INT 7319. VLCC buoy (22-36.2N, 069-16.6E) and Dhani buoy (22-36.8N 069-27.5E) UNLIT. North cardinal buoy (22-34.1N 069-18.35E) and Ranwara buoy (22-39.2N 069-19.8E) missing.</p> <p>2. Cancel NAVAREA VIII MSG 064/23.</p>
<p><b>776. India West Coast - off Mumbai.</b> Charts IN 21 255 292 INT 7021. Vanessa 7 will carry out seabed survey in vicinity of 19-22.42N 072-13.51E, 19-02.27N 071-28.55E, 20-24.43N 072-10.41E, 18-16.45N 072-22.79E, 18-46.02N 072-17.97E, 18-34.48N 072-16.76E, 18-47.74N 071-15.67E, 19-23.20N 071-17.41E, 19-18.76N 072-02.35E, 20-20.04N 072-07.55E, 19-18.21N 071-30.65E from 08 Sep to 08 Oct 23. Wide berth requested.</p> <p>2. Cancel this MSG 081830 UTC Oct 23.</p>
<p><b>777. Cancel NAVAREA VIII MSG 856/22 and this MSG.</b></p>
<p><b>778. Andaman Sea - off Barren I.</b> Charts IN 41 473 7706 INT 7031. Firing by CG aircraft scheduled from 120830 to 121030 UTC Sep 23 in danger area bounded within 11-50N to 12-00N and 093-40E to 094-10E. Wide berth from area advised.</p> <p>2. Cancel this MSG 121130 UTC Sep 23.</p>
<p><b>779. India East Coast - off Sagar I.</b> Charts IN 31 301 351 INT 7419. Firing by CG aircraft scheduled from 120430 to 121030 UTC Sep 23 in danger area bounded within 20-37N to 20-52N and 088-30E to 089-00E. Wide berth from area advised.</p> <p>2. Cancel this MSG 121130 UTC Sep 23.</p>
<p><b>780. India East Coast - off Kakinada.</b> Charts IN 31 354 INT 756. Firing scheduled from 092330 to 100230 UTC Sep 23 in danger area bounded within 16-30.41N to 16-56.90N and 084-00.20E TO 084-29.63E. Wide berth from area advised.</p> <p>2. Cancel this MSG 100330 UTC Sep 23.</p>
<p><b>781. India West Coast - off Mumbai.</b> Charts IN 21 254 255 292 INT 7021. ACOMS 11 will carry out pipeline survey in areas bounded by (a) 21-04.75N 072-21.28E, 21-04.64N 072-26.80E, 21-01.28N 072-26.72E, 21-01.39N 072-21.21E from 09 to 16 Sep 23 (b) 19-42.47N 070-45.39E, 19-41.76N 071-40.36E, 19-18.58N 071-40.01E, 19-19.19N 070-45.14E from 17 to 22 Sep 23. Wide berth requested.</p> <p>2. Cancel this MSG 221830 UTC Sep 23.</p>
<p><b>782. NAVAREA VIII - Warnings in force as on 08 Sep 2023</b>  <b>2022 Series</b> - 049 118 134 162 237 253 259 286 445 461 476 497 519 646 757 997  <b>2023 Series</b> - 116 161 178 179 240 280 307 386 455 456 484 574 593 604 622 655 674 675 676 695 696 703 712 725 727 733 738 741 742 748 750 756 758 759 761 763 767 772 774 775 776 778 779 780 781  (A) NAVAREA VIII Warnings less than 42 days promulgated via safetynet.  (B) Text of NAVAREA VIII Warning inforce including those which no longer broadcast available in <a href="http://www.hydrobharat.gov.in">www.hydrobharat.gov.in</a>  2. Cancel this MSG 151000 UTC Sep 23.</p>
<p><b>783. India East Coast - off Visakhapatnam.</b> Charts IN 31 354 INT 7408. Firing scheduled from 110400 to 111000 UTC Sep 23 in danger area bounded within 17-25N to 17-50N and 083-50E to 084-35E. Wide berth from area advised.</p> <p>2. Cancel this MSG 111100 UTC Sep 23.</p>
<p><b>784. India West Coast - off Porbandar.</b> Charts IN 21 252 292 INT 7021. Firing by CG aircraft scheduled from 130330 to 130630 UTC Sep 23 in danger area bounded by 21-32N 069-24E, 21-17N 069-24E, 21-17N 069-06E, 21-32N 068-56E. Wide berth from area advised.</p> <p>2. Cancel this MSG 130730 UTC Sep 23.</p>
<p><b>785. Southern Indian Ocean.</b> Charts IN 7070 7073 INT 73. Space debris predicted from 14 to 21 Sep 23 between 2359 UTC and 0658 UTC in area bounded by 08-53S 092-28E, 07-46S 089-27E, 30-12S 061-09E, 40-45S 002-21W, 42-56S 002-24W, 32-16S 063-10E. Wide berth from area advised.</p> <p>2. Cancel NAVAREA VIII MSG 774/23 and this MSG 210758 UTC Sep 23.</p>
<p><b>786. India East Coast - off Chennai.</b> Charts IN 32 313 356 391 INT 7400. Firing by CG aircraft scheduled from 150130 to 151130 UTC Sep 23 in danger area bounded within 12-49N to 12-59N and 080-46E to 081-26E. Wide berth from area advised.</p> <p>2. Cancel this MSG 151230 UTC Sep 23.</p>
<p><b>787. India West Coast - off Karwar.</b> Charts IN 22 257 294 7706 INT 7343. Subsurface firing scheduled 15 to 18 Sep 23 from 1330 to 1730 UTC in danger area bounded by 14-22.43N 073-18.13E, 14-36.87N 073-13.98E, 14-34.74N 073-03.78E, 14-20.67N 073-07.80E. Wide berth from area advised.</p>

<b>787. Continued</b>
2. Cancel this MSG 181830 UTC Sep 23.
<b>788. India East Coast - off Kakinada.</b> Charts IN 31 32 355 391 INT 7405. Lay vessel 108 progressing survey in area bounded by 16-28.17N 082-24.10E, 16-25.57N 082-25.75E, 16-19.26N 082-22.92E, 16-17.49N 082-20.36E, 16-18.34N 082-14.43E, 16-20.53N 082-14.52E. Wide berth of 5 Nm requested.
2. Cancel this MSG 301830 UTC Sep 23.
<b>789. India West Coast - off Kollam.</b> Charts IN 22 221 7706 INT 752. Firing scheduled 15 and 16 Sep 23 from 0430 to 1130 UTC in danger area bounded within 08-58N to 09-13N and 075-18E TO 075-33E. Wide berth from area advised.
2. Cancel this MSG 161230 UTC Sep 23.
<b>790. Lakshadweep Sea - Minicoy I.</b> Charts IN 273 2006 INT 752. DGPS (08-16.16N 073-01.57E) transmission will be switched off from 140330 to 141130 UTC Sep 23 for maintenance.
2. Cancel this MSG 141130 UTC Sep 23.
<b>791. India West Coast - Gulf of Kachchh.</b> Charts IN 21 203 2060 INT 7332. Barge Leighton eclipse, AHT Susanna will carry out pipeline laying and SPM installation from 15 Sep 23 to 15 Jan 24 in vicinity of 22-31.60N 069-42.48E, 22-31.57N 069-41.26E. Wide berth requested.
2. Cancel this MSG 151830 UTC Jan 24.
<b>792. Cancel NAVAREA VIII MSG 738/23 And this MSG.</b>
<b>793. India East Coast - off Sagar I.</b> Charts IN 31 301 351 INT 7419. Firing by CG aircraft scheduled from 180430 to 181030 UTC Sep 23 in danger area bounded within 20-37N to 20-52N and 088-30E to 089-00E. Wide berth from area advised.
2. Cancel this MSG 181130 UTC Sep 23.
<b>794. India West Coast - Azhikode.</b> Charts IN 220 259 2029 INT 7358. DGNSS (10-12.20N 076-09.46E) Transmission will be switched off from 18 Sep 23 for maintenance.
<b>795. Southern Indian Ocean.</b> Charts IN 7070 7073 INT 73. Space debris predicted from 19 to 25 Sep 23 between 0139 UTC and 0840 UTC in area bounded by 08-53S 092-28E, 07-46S 089-27E, 30-12S 061-09E, 40-45S 002-21W, 42-56S 002-24W, 32-16S 063-10E. Wide berth from area advised.
2. Cancel this MSG 250940 UTC Sep 23.
<b>796. NAVAREA VIII - Warnings in force as on 15 Sep 2023</b>
<b>2022 Series</b> - 049 118 134 162 237 253 259 286 445 461 476 497 519 646 757 997
<b>2023 Series</b> - 116 161 178 179 240 280 307 386 455 456 484 574 593 604 622 655 674 675 676 696 703 712 725 727 733 741 742 748 750 756 758 759 761 775 776 781 785 787 788 789 791 793 794 795
(a) NAVAREA VIII Warnings less than 42 days promulgated via safety net.
(b) Text of NAVAREA VIII Warnings in force including those which no longer broadcast available in <a href="http://www.hydrobharat.gov.in">www.hydrobharat.gov.in</a>
2. Cancel this MSG 221000 UTC Sep 23.



## **SECTION – VI**

### **CORRECTIONS TO SAILING DIRECTIONS (PILOTS)**

#### **West Coast of India Pilot (INP-1)**

#### **Chapter - 5 (Page 209)**

#### **Munambam Fishing Harbour**

*Article 5.109, Para 1, Line 8, After Munambam.*

*Delete entry*

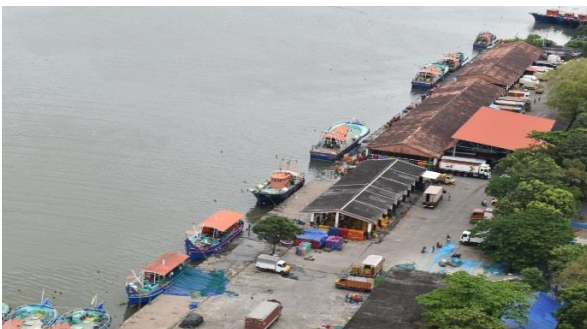
***Insert new para 2&3 after para 1:***

2 The harbour is well protected from North breakwater (Azhikode side) and South breakwater (Munambam side). The breakwaters are made of concrete blocks and stones. The length extended up to 1500 mtr north and 890 mtr south breakwater from the coast. The entire coast inside the Harbour is made up of sea wall of concrete and stone of small height except at some places which are full of mud. The sea inside channel observed to be calm during the high sea states and strong winds. The harbour can only be approached by the small boats (Gemini, RIB) which have draft 1.5 mtr or less.



Munambam Harbour Breakwater

3 **Berths.** The munambam harbour is a fishing harbour. A 250 mtr long fishing jetty is situated ½ NM West of south breakwater (Munambam side) and a small fishing jetty of 60 mtr long is situated 01 NM of west of North breakwater (Azhikode side). The small and medium fishing crafts and boats having draft 01 mtr can be secured alongside the fishing jetty. However small concrete platforms are made at many places for securing of fishing boats and loading ice from ice factories. A boat fuelling station (Hindustan Petroleum Ltd.) is also situated near fishing jetty.



Munambam Fishing Berths

## SECTION – VII

### CORRECTIONS TO LIST OF LIGHTS

No	Name & Location	Position (Lat-Long)	Characteristics	Ht. (mts)	Range (miles)	Structure & Height (mts)	Remarks
D7313-6	Dalqut. Fishing Pontoons. Entrance	16 42-21 N 53 15-23 E	Iso G 2s *	4	4	Beacon 1 *	..
D7315-92	GULF OF MASIRAH. Ad Duqm Port - - Commercial Quay. Jetty	19 39-96 N 57 43-45 E	Fl(2+1)Y 10s *	7	3	Metal post 2	..
D7670-5	BUSHEHR Remove from list; deleted						
D7677-1	Deyyer. Breakwater. Head * *	27 49-61 N 51 55-58 E *	Fl(2)G 6s *	..	5	Green Δ on green beacon *	.. *
D7677-2	- - - * *	27 49-53 N 51 55-54 E *	Fl(2)R 6s *	..	5	Red □ on red beacon *	.. *
D7677-4	- - - * *	27 50-00 N 51 53-34 E *	Fl(2)R 6s *	..	5	Red □ on red beacon *	.. *
D7677-6	- - - * *	27 50-07 N 51 53-32 E *	Fl(2)G 6s *	..	5	Green Δ on green beacon *	.. *
D7680-5	Ra's-e Nay Band. South-eastward	27 07-64 N 53 00-02 E	Fl(2)W 12s *	..	12	Metal tower *	..
D7710-7	Bandar-e Sirik * *	26 31-75 N 57 04-32 E *	Fl G 5s *	5	5	Δ on green beacon *	.. *
D7710-8	- * *	26 31-74 N 57 04-39 E *	Fl R 5s *	5	5	□ on red beacon *	.. *
D7711	-	26 29-93 N 57 04-81 E	Fl(2)W 12s *	25	12	.. *	.. *
D7711-5	-	26 25-89 N 57 01-93 E	Fl(2)W 6s	2	5	O on black pile, red band 2 * *	..
D7722	KHALIJ-E CHABAHAR. Damagheh-ye Chabahar - - Breakwater. Head	25 18-37 N 60 35-00 E	Fl(3)G 6s *	..	5	Green pile	..
F0476.3	GULF OF KHAMBAT. Surat Anchorage. Hazira - - -Ldg Lts 069°. Front	21 05-51 N 72 37-49 E	Fl W 4s	30	12	.. *	..
F0476.31	- - - - Rear	21 05-57 N 72 37-65 E	Fl W 4s	35	12	.. *	..

7.2

<b>F0730</b>	<b>Manappad Point</b>	08 22.37 N 78 03.97 E	Fl(2)W 10s	45	23	White round masonry tower, red diagonal stripes	<i>fl 0.2, ec 1.5, fl 0.2, ec 8.1.</i> W115°-070° (315°). <b>Range 10M (T) 2023</b> ILRS Vol 2 Station 79098 MMSI No 004194415 *
-		..	Racon	..	..	..	
-		..	AIS	..	..	..	
<b>F1222.5</b>	<b>Bampoka Island</b>	08 13.45 N 93 14.75 E	Fl(2)W 20s	43	<b>16</b>	Red Metal Framework tower, White bands 12	<i>fl 1, ec 2, fl 1, ec 16</i> <b>TE 2023</b> *
<b>F1374.4</b>	Tg Sibungabunga. Ular River	03 40.78 N 98 54.35 E	Fl W 10s	10	12	Beacon	.. *
*	*	*	*	*	*	*	*

**SECTION – VIII**  
**CORRECTION TO LIST OF RADIO SIGNALS**

**INP 31(1), 2019**

*(Last correction: Edition No. 09 dated 01 May 2023)*

NIL

**INP 31(2), 2019**

*(Last correction: Edition No. 11 dated 01 Jun 2023)*

NIL

**INP 31(5), 2021**

*(Last correction: Edition No. 17 dated 01 Sep 2023)*

NIL

**INP 31(6), 2018**

*(Last correction: Edition No. 16 dated 16 Aug 2023)*

**PAGE 69, INDONESIA, BATUAMPAR, Sumatera,  
Vessel Traffic Service, CONTACT DETAILS section**

*Delete entry and replace by:*

**CONTACT DETAILS:**

Call: VTS Batam

VHF Channel: Ch 16; 67 68 71 72 84

Telephone: +62(0)778 4100028

+62(0)778 412741

Fax: +62(0)778 4100029

+62(0)778 412857

E-mail: adminvts@batamvts.com

Website: www.batamvts.com

MMSI: 005250012

**Below Port, CONTACT DETAILS section**

*Insert new section:*

**PROCEDURE:**

**Notice of ETA:** Message should contain the following information:

- (1) Vessel's name
- (2) Position
- (3) Port of origin/ destination
- (4) Draught
- (5) LOA
- (6) Damage/ deficiency
- (7) Load
- (8) Dangerous cargo (if any)
- (9) Number of passengers and crew
- (10) Name of Agent

## **SECTION – IX**

### **REPORTING OF NAVIGATIONAL DANGERS**

#### **Appeal to all Mariners**

1. Mariners at sea whilst on passage, or whilst entering / leaving ports / Harbour and other waterways, are requested to look out for new or suspected dangers to navigation, changes in aids to navigation, or corrections to published charts and Sailing Directions. Whenever any such changes / dangers are observed, mariners are requested to notify the same to the Chief Hydrographer to the Government of India at the following address: -

National Hydrographic Office  
107-A, Rajpur Road,  
Dehradun - 248001  
(Uttarakhand), India

e-mail : [msis-inho@navy.gov.in](mailto:msis-inho@navy.gov.in), [inho@navy.gov.in](mailto:inho@navy.gov.in)  
Fax No. : +91-135- 2748373  
Web : [www.hydrobharat.gov.in](http://www.hydrobharat.gov.in)

#### **Instructions for filling up IH 102**

2. Kindly follow the instructions below in order to help the Hydrographic Office (the recipient) to quickly issue NAVAREA warning / Notice to Mariners for the benefit of all other mariners at sea.

#### **Position Reporting**

3. Accurate position or knowledge of position error is of great importance. Latitude and Longitude should only be used to specify position details when they have been fixed by GPS or Astronomical Observations. A full description of the method, equipment, time and datum (WGS 84/Everest/Other) used should be given. When position is defined by sextant angles or bearings (true or magnetic to be specified), more than two bearings should be used in order to provide a redundancy check. Distances observed by Radar should be corrected for index errors. Where position is derived after the event, from other observations and/or Dead Reckoning, the methodology of deriving the position should be included.

4. **Paper Charts.** A copy/tracing of largest scale chart is the best medium for forwarding details, the alterations and additions being shown thereon in red, but adequate details from the chart must be traced in black ink to enable the amendments to be fitted correctly.

5. **ENCs.** A Screen shot of largest scale usage band ENC with the alterations and additions being shown thereon in red. If it is to report an issue with the display of an ENC, a screen shot of the affected cell should be sent along with details of the ECDIS make and version in use at the time.

#### **Depth Reporting**

6. When soundings are obtained using echo sounders, the echo sounding trace should be duly annotated with date, times, position, depths, etc., and forwarded with the IH102. It is important to state whether the echo sounder is set to register depths below the surface or below the keel; in the latter case the vessel's draught should be given. Time and date should be given in order that corrections for the height of the tide may be made where necessary. The make, name and type of echo sounder should also be given.

7. For modern echo sounders that use electronic 'range gating', care should be taken that the correct range scale and appropriate gate width are in use. Older electro-mechanical echo sounders frequently record signals from echoes received back after one or more rotations of the stylus have been completed. Thus with a set whose maximum range is 500m, an echo recorded at 50m may be from depths of 50m, 550m or even 1050m. Soundings recorded beyond the set's nominal range can usually be recognised by the following:

- (a) The trace being weaker than normal for the depth recorded;
- (b) The trace passing through the transmission line;
- (c) The feathery nature of the trace.

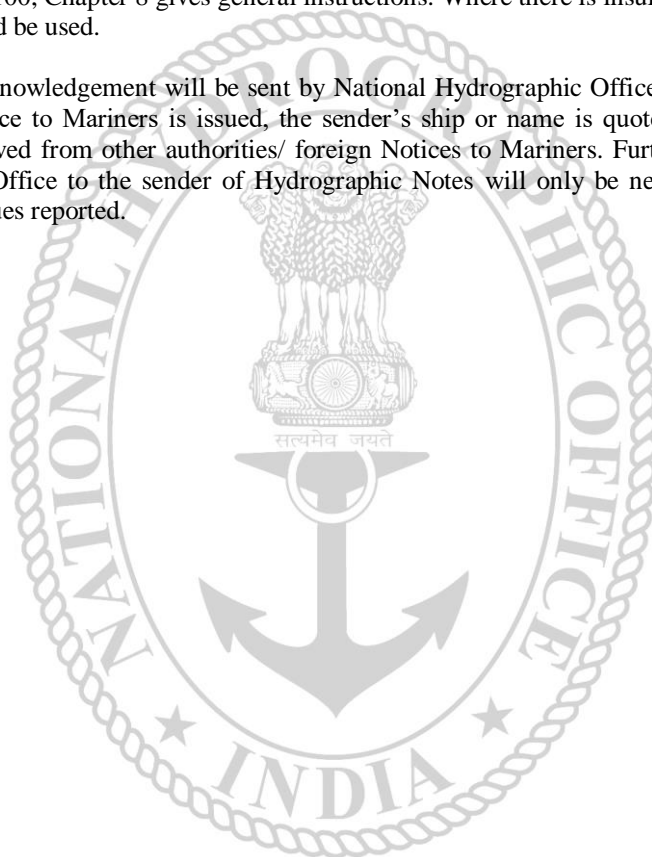
As a check that apparently shoal soundings are not due to echoes received beyond the set's nominal range, soundings should be continued until reasonable agreement with charted soundings is reached. However, soundings received after one or more rotations of the stylus can still be useful and should be submitted if they show significant differences from the charted depths. Efforts should be made to identify and negate false echoes if any. The Mariners Handbook (NP100) and Notice 15 Special Edition of Notice to Mariners may be consulted.

8. Reports which cannot be confirmed or are lacking in certain details should not be withheld. Shortcomings should be stressed and any firm expectation of being able to check the information on a succeeding voyage should be notified.

9. Reports of **shoal soundings**, uncharted dangers and aids to navigation out of order should, at the mariner's discretion, also be made by radio to the nearest coast radio station. The draught of modern tankers in such that any uncharted depth under 30 meters or 15 fathoms may be of sufficient importance to justify a radio message.

10. Changes to Port information should be forwarded on Form IH.102A together with form IH.102. Form 102A contains the information required for Sailing Directions and should be used as an *aide memoir*. The Mariners Handbook, NP100, Chapter 8 gives general instructions. Where there is insufficient space on the forms an additional sheet should be used.

**Please Note:** - An acknowledgement will be sent by National Hydrographic Office for Hydrographic Notes, on receipt. When a Notice to Mariners is issued, the sender's ship or name is quoted as authority unless the information is also received from other authorities/ foreign Notices to Mariners. Further, communication from National Hydrographic Office to the sender of Hydrographic Notes will only be necessary to verify unusual features or abnormal values reported.



HYDROGRAPHIC NOTE				IH.102 (Revised 2012)	
For Forwarding information for Indian Charts, ENC's and Publications and reporting of ENC related issues					
Date			Ref. Number		
Name of the Ship or Sender					
Address					
Tel/FAX/E-mail address					
Observation Date			Time (UTC/IST)		
Object of Changes Observed (Tick appropriate)	<input type="checkbox"/> Bathymetry		<input type="checkbox"/> Nav. Dangers		<input type="checkbox"/> Nav. aids
	<input type="checkbox"/> Designated Areas		<input type="checkbox"/> Others		
Geographical Position (See Instructions Overleaf)	Latitude		Longitude		
Position Method	<input type="checkbox"/> DGPS	<input type="checkbox"/> GPS	<input type="checkbox"/> Radar	<input type="checkbox"/> Others	
Datum Used	<input type="checkbox"/> WGS84	<input type="checkbox"/> Everest	<input type="checkbox"/> Others		
Charts Affected			Edition		
Latest Edition of Indian Notices to Mariners Held					
Tracing/Plot/Photograph if enclosed					
ENCs Affected					
Latest Update Disk Held					
Publication Affected			Edition		
Page No./Light No. etc					
Details:					
Limitations if any in Reporting the Changes Above					
Details of Documents/Photos attached:					
Signature of the Master/Reporter/Observer					

HYDROGRAPHIC NOTE FOR PORT INFORMATION (To accompany Form IH.102)		IH.102A (Revised 2012)	
Date		Ref. No.	
Name of the Ship or Sender			
Address			
Tel/Fax/E-mail			
<b>1. NAME OF PORT</b>			
Location	Latitude		Longitude
<b>2. GENERAL REMARKS</b>			
Principal activities and trade			
Number of ships and tonnage handled per year			
Maximum size of draught of vessel handled			
Copy of Port handbook (if available)			
<b>3. ANCHORAGES</b>			
Type / Purpose			
Minimum depth at anchorage			
Shelter afforded			
Holding ground			
Recommended pilotage to the anchorage			
<b>4. PILOTAGE</b>			
Authority for request			
Embarkation position			
Regulations			
Documents to be provided			
Recommended pilotage to approach of Harbour and Berths			
Information on VTMS			
<b>5. DIRECTIONS</b>			
Entry and Berthing Information			
Tides (Height)			
Tidal Stream Information			
Wind Speed and Direction			
Navigational Aids (Beacons / Buoys / Lights / Etc.)			
<b>6. POLLUTION CONTROL</b>			
Local regulation in force (If Any)			
<b>7. TUGS</b>			
Number available / Tug type			
Maximum HP / Bollard pull			



<b>7. TUGS (Continued)</b>	
Requesting authority	
Availability timing / Communication	
Hiring charges	
<b>8. BERTHING AND WHARVES</b>	
Type & Number of berths available	
Length	
Depth alongside	
Facilities available	
Procedure for requesting berth & hiring charges	
<b>9. CARGO HANDLING</b>	
Containers	
Lighters & Ro-Ro etc.	
<b>10. CRANES</b>	
Brief details of Max. lifting capacity, Height of boom at wharf level and Outreach	
Container handling facilities	
<b>11. BRIDGES</b>	
Vertical clearance	
<b>12. REPAIRS</b>	
Hull machinery and underwater	
Ship and Boat yards	
Docking or Slipway facilities (Size/ Dimensions of vessels handled)	
Hards and Ramps	
Divers / Diving assistance	
<b>13. SERVICES</b>	
Radio / FAX / Telephone / Internet etc.	
Medical	
Quarantine	
Consul	
Ship chandlery and Stevedores	
Compass adjustment	
Tank cleaning	
Hull painting	
Police / Ambulance / Firefighting (Fixed and Mobile facilities)	
Nav. Warning and Weather bulletin	
Garbage disposal / Waste oil disposal	
Helicopter landing facilities	

<b>14. RESCUE &amp; DISTRESS</b>	
Salvage, Lifeboat, Life guards, etc	
<b>15. SUPPLIES</b>	
Fuel (Type, Quantities & Method of delivery)	
Fresh water (Method of delivery and Rate of supply)	
Provisions	
Chart agents	
<b>16. COMMUNICATIONS</b>	
Road, Rail and Air services available	
Nearest airport or airfield	
Port Radio and Information Service (Frequencies and Operating Hours)	
<b>17. PORT AUTHORITY</b>	
Designation, Address, Telephone, E-mail Address and Website	
<b>18. SECURITY</b>	
Security of ports / International Ship and Port Facility Security (ISPS) compliance	
Custom and Immigration Regulations in force	
<b>19. SMALL CRAFT FACILITIES</b>	
Information and facilities for small craft, yachts visiting the port	
Yacht clubs, berths etc	
<b>20. SHORT LEAVE</b>	
<b>21. CLUBS RECREATION</b>	
Information Kiosk (Location)	
Foreign Exchange firms / Banks (Within / Near Port Area)	
Places of interest near port	
<b>22. VIEWS</b>	
Photographs(Duly annotated) of the approaches, leading marks, the entrance to the harbour etc.	
<b>23. ADDITIONAL DETAILS</b>	
Any other information considered to be useful for the mariners	
<b>SIGNATURE OF THE OBSERVER / REPORTER / MASTER</b>	



**FOR 24 X 7 SAR ASSISTANCE IN INDIAN SRR**

**Email: [mrcc-west@indiancoastguard.nic.in](mailto:mrcc-west@indiancoastguard.nic.in)**

**NATION WIDE SAR TELE: 1554 (LAND LINE)**

**INMARSAT C (IOR) 441907210 CODE: 43 (TOLL FREE)**

**AFTN: VABBYXYC**